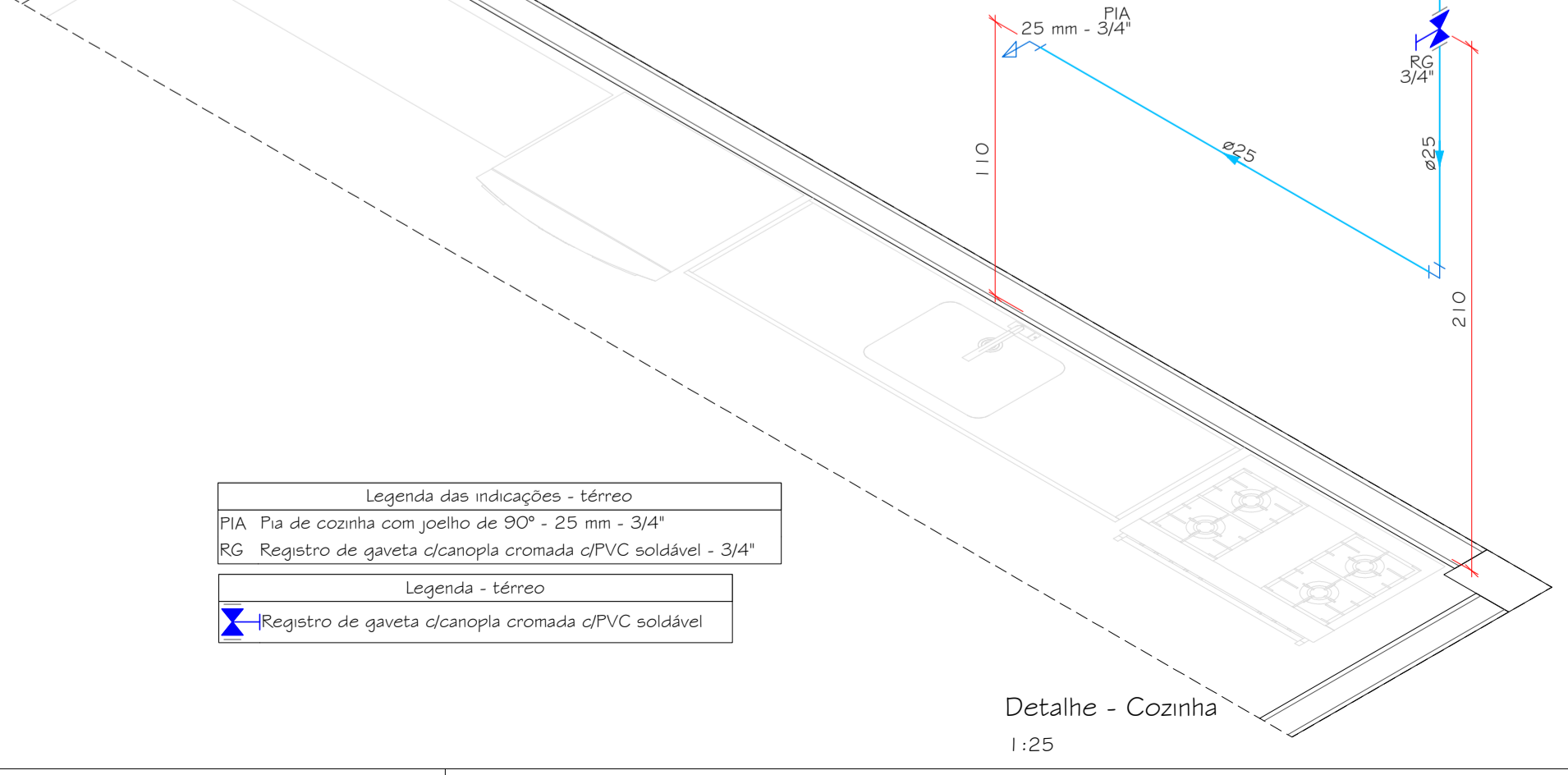
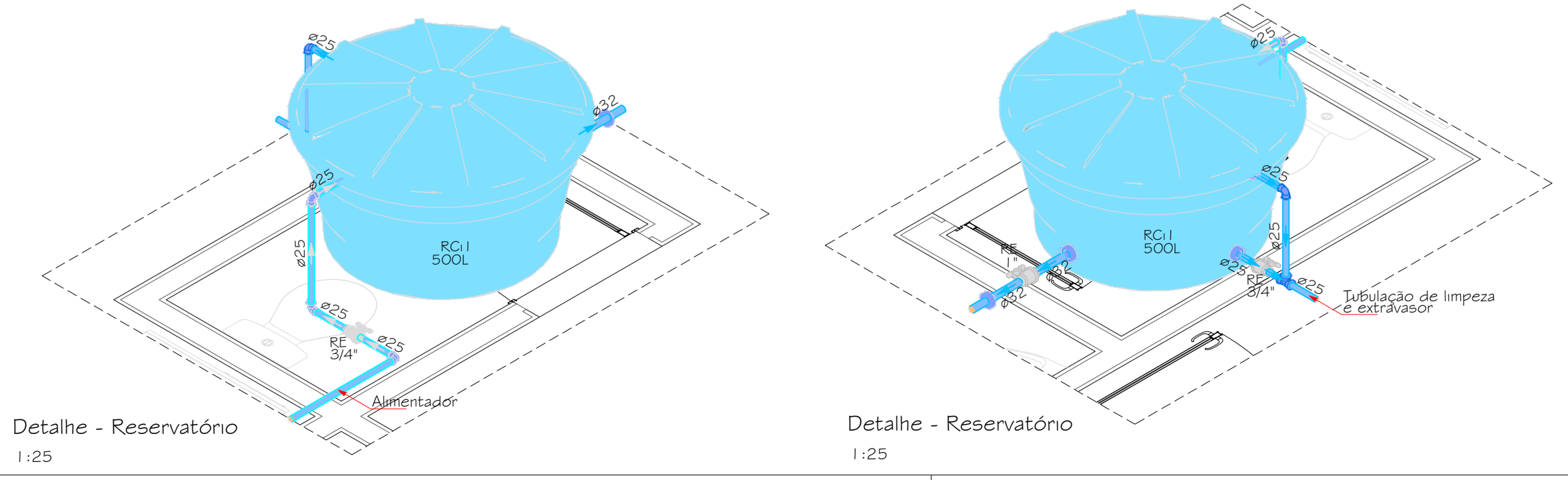
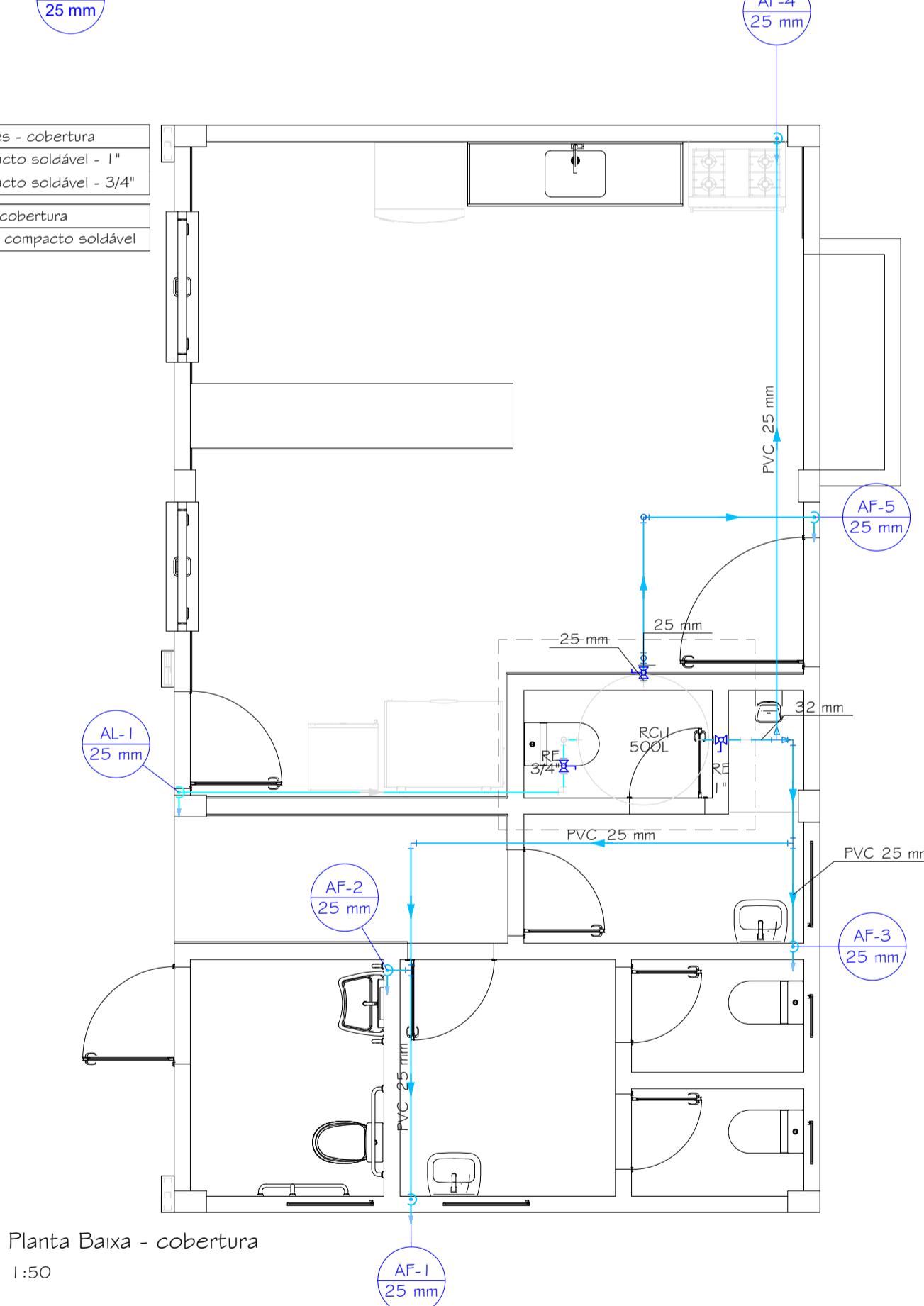
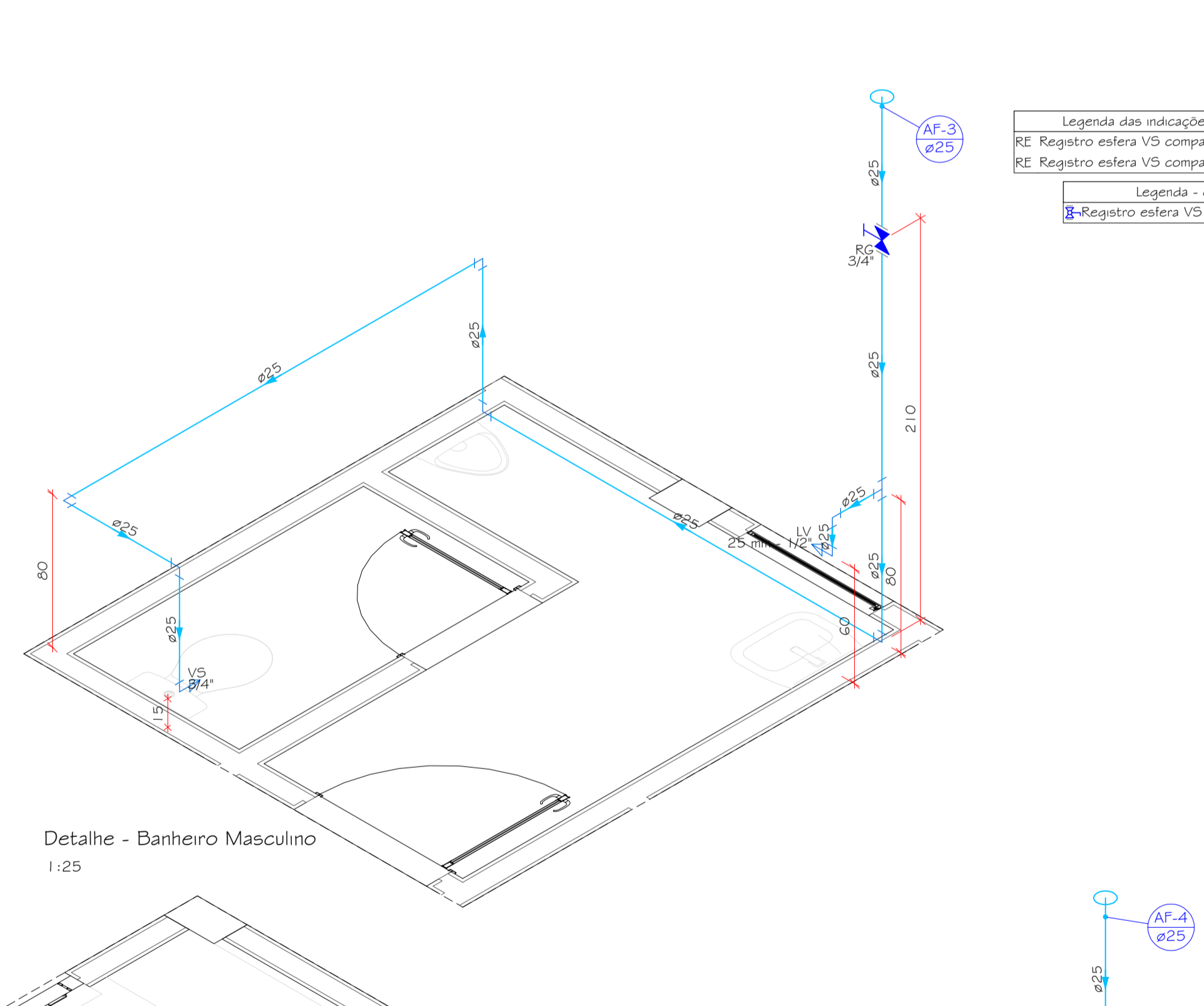
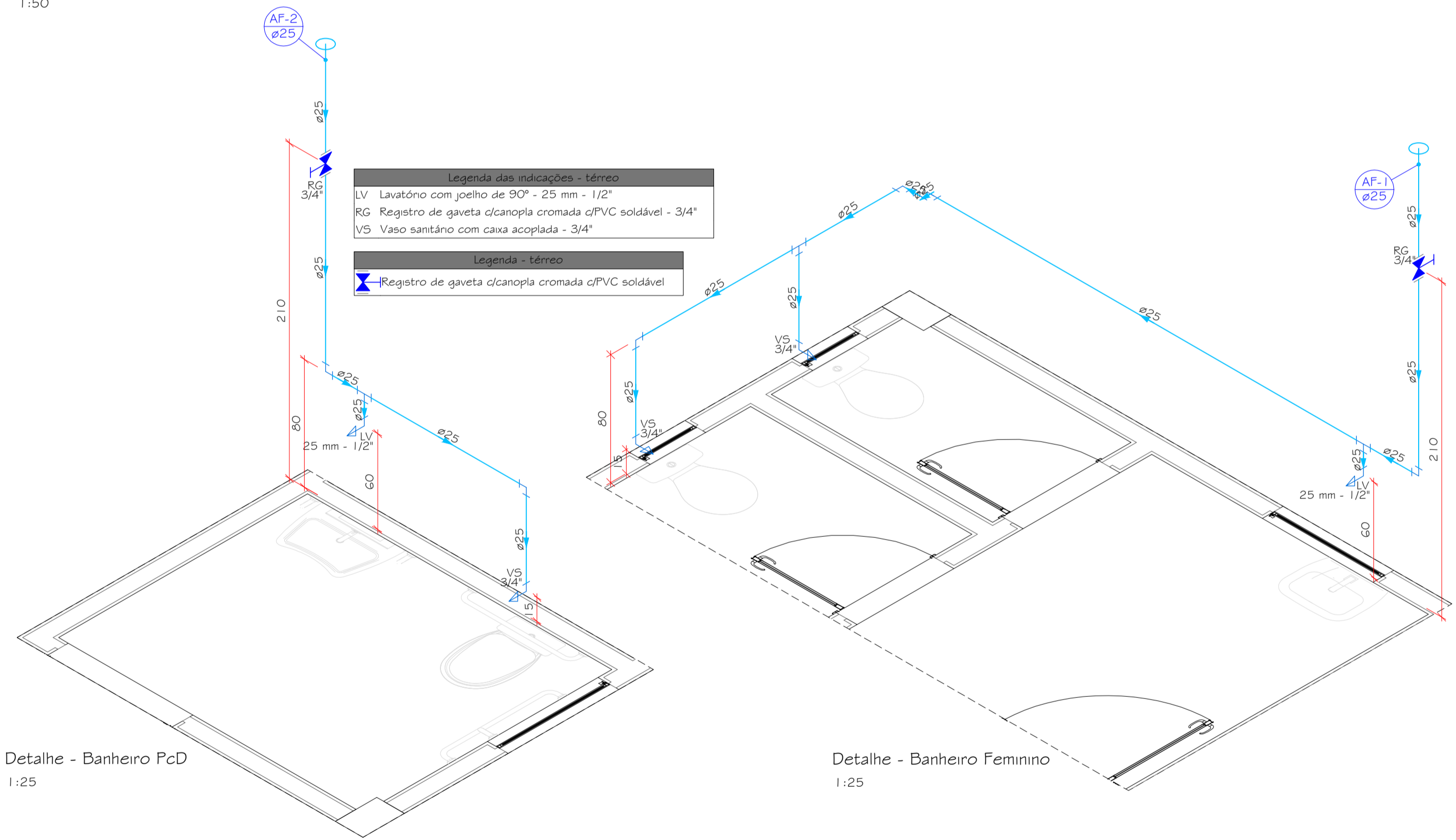


Planta Baixa - térreo
1:50



PROJETO

ASSURE
ENGENHARIA E TECNOLOGIA

REFORMA E AMPLIAÇÃO PAVILHÃO L. CUTIA

LOCAL:
Interior - Linha Cutia, Novo Xingu/RS - CEP: 99687-000

RESPONSÁVEL TÉCNICO:
Tays Lucia Remonchi
CREA/RS 247973

PROPRIETÁRIO:
Prefeitura Municipal de Novo Xingu
04.207.526/0001-06

CONTEÚDO:
Projeto hidráulico

PROJETO:
Hidrossanitário

ÁREA:
62,33m²

DATA:
18/06/2024

FRANCHA:
01 / 02

DIREITOS AUTORAIS RESERVADOS. LEI 9.610/98